



### Building Amenities:

- Walking distance to BART, 45 minutes to Financial District
- Walking distance to Stoneridge Mall, Cheesecake Factory, PF Chang's and Nordstrom
- Ample parking, 3.5/1,000
- Asking rate: \$2.40FS
- Proximity to retail, restaurants and hotels
- Common area conference room
- Strong local based ownership
- Monument and eyebrow signage available
- Direct access to highway 580 and 680

### Available Suites:

Suite	SF	Available	Comments
250	±1,869	01/01/2018	3 private offices, conference, reception, break area

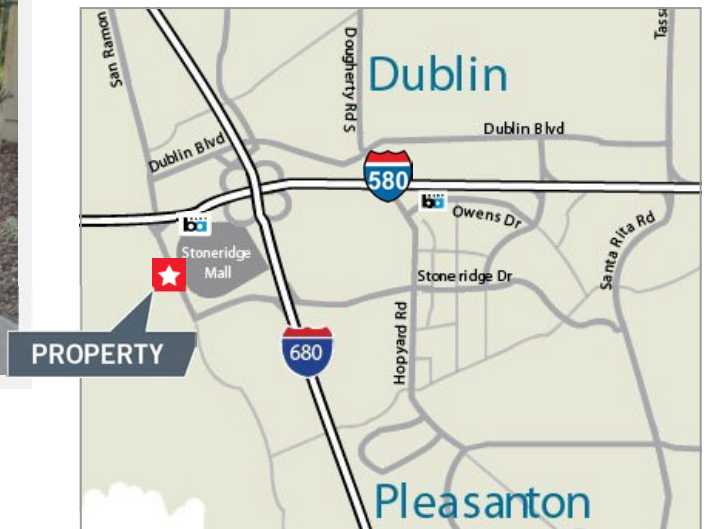
For more information, please contact:

**Justin Grilli**  
**Vice President**  
 +1 925 621 3858  
[justin.grilli@cushwake.com](mailto:justin.grilli@cushwake.com)  
 LIC #01410373

5000 Hopyard Road, Suite 205  
 Pleasanton, California 94588

T: +1 925.621.3840  
 F: +1 925.621.3841

[www.cushmanwakefield.com](http://www.cushmanwakefield.com)



For more information, please contact:

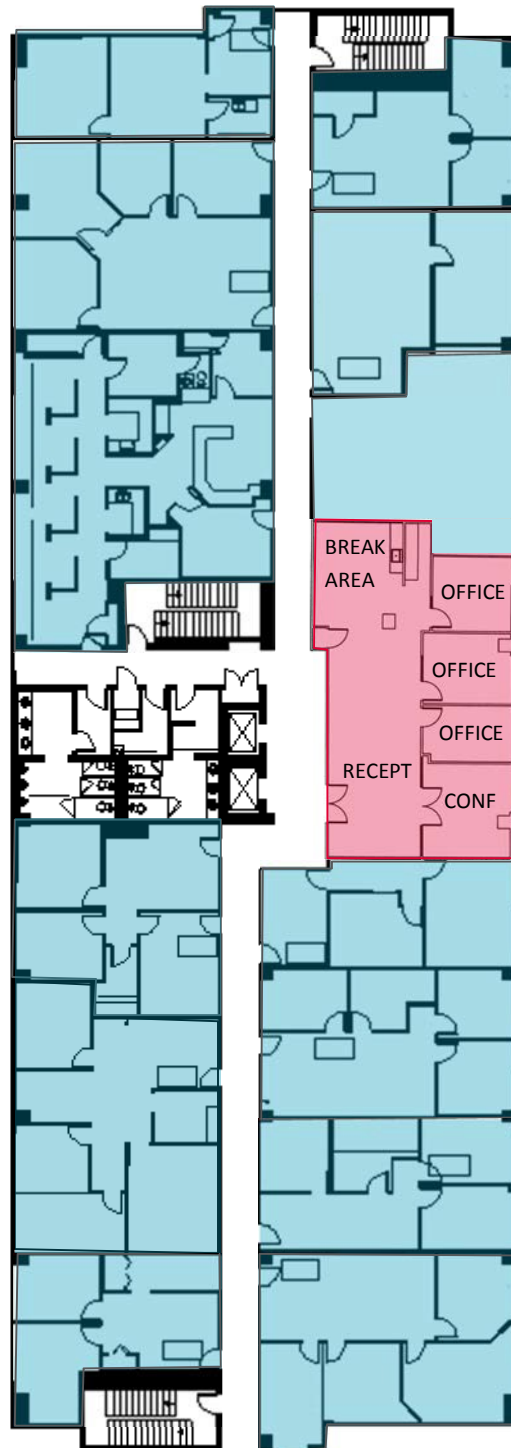
**Justin Grilli**  
Vice President  
+1 925 621 3858  
[justin.grilli@cushwake.com](mailto:justin.grilli@cushwake.com)  
LIC #01410373

5000 Hopyard Road, Suite 205  
Pleasanton, California 94588

T: +1 925.621.3840  
F: +1 925.621.3841

[www.cushmanwakefield.com](http://www.cushmanwakefield.com)

**Second Floor:**



**Suite 250: ±1,869 SF**

For more information, please contact:

**Justin Grilli**  
**Vice President**  
+1 925 621 3858  
[justin.grilli@cushwake.com](mailto:justin.grilli@cushwake.com)  
LIC #01410373

5000 Hopyard Road, Suite 205  
Pleasanton, California 94588

T: +1 925.621.3840  
F: +1 925.621.3841

[www.cushmanwakefield.com](http://www.cushmanwakefield.com)